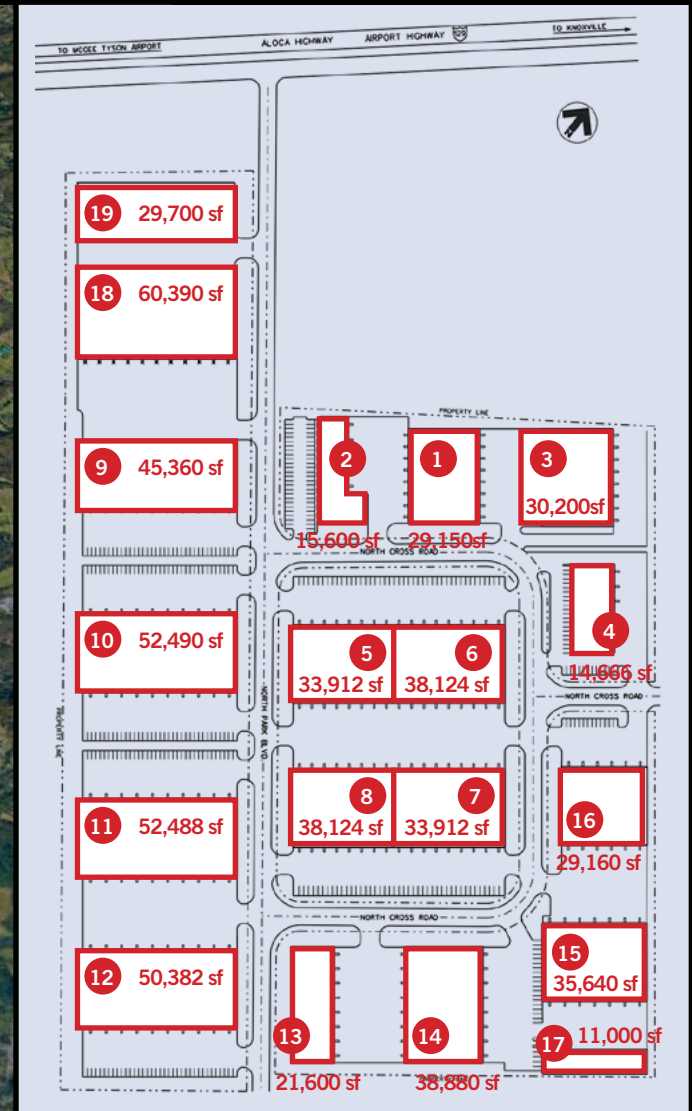




West Knoxville

Downtown

- Strategically located at the intersection of I-140 and Alcoa Highway
- Just minutes from McGhee Tyson airport
- Easy access to West Knoxville and downtown Knoxville



**FOR MORE INFORMATION** John Osborne [josborne@fiserinc.com](mailto:josborne@fiserinc.com) 865-693-0711 w 865-207-6479 m



**Fiser, inc.**

fiserinc.com

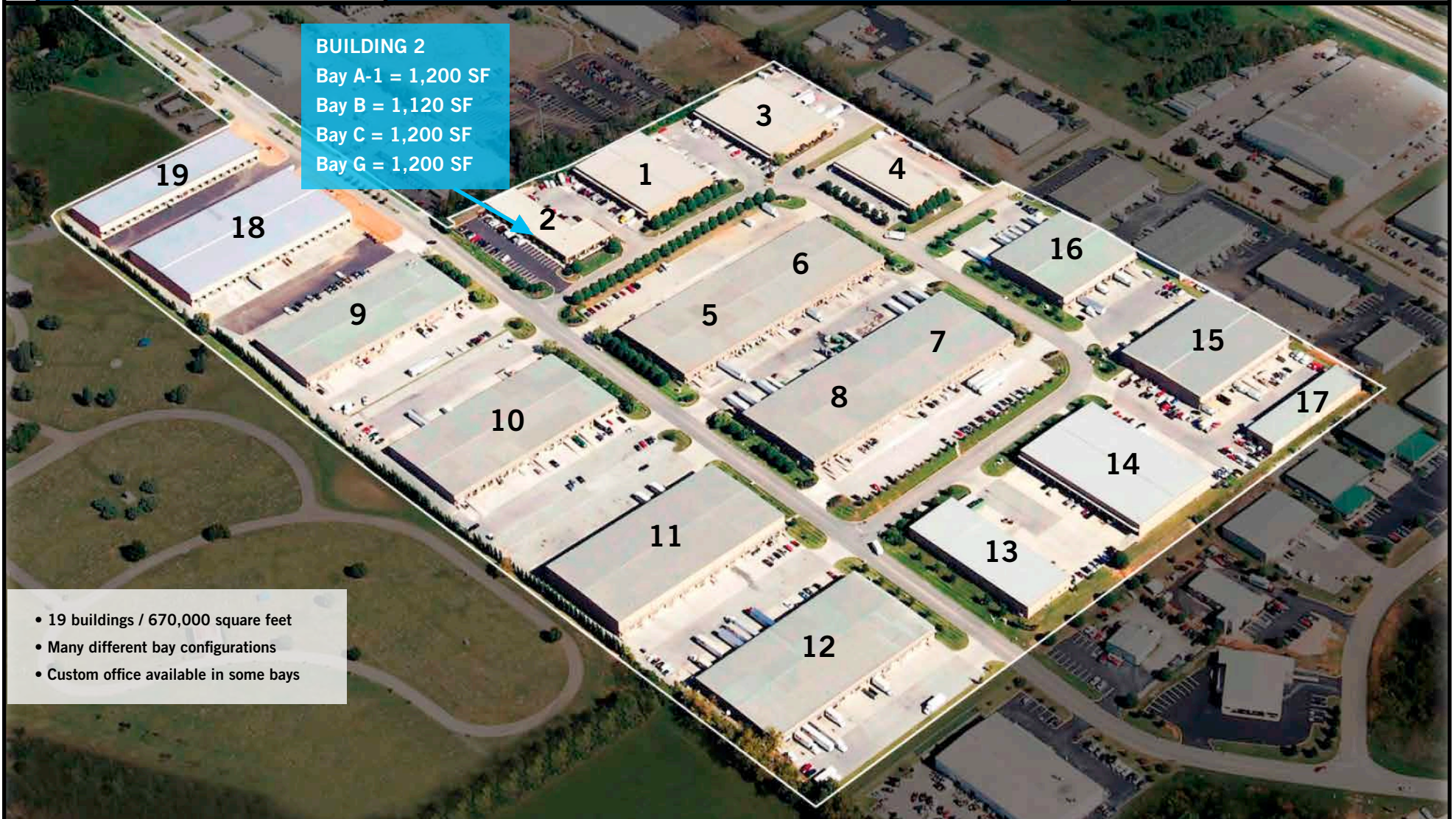
**NORTH PARK**  
INDUSTRIAL COMPLEX



- 1,200 - 50,000 square feet bays
- Multi Dock and Drive-In
- Covered Dock Areas
- Double Loaded Bays

**FOR MORE INFORMATION** John Osborne [josborne@fiserinc.com](mailto:josborne@fiserinc.com) 865-693-0711 w 865-207-6479 m



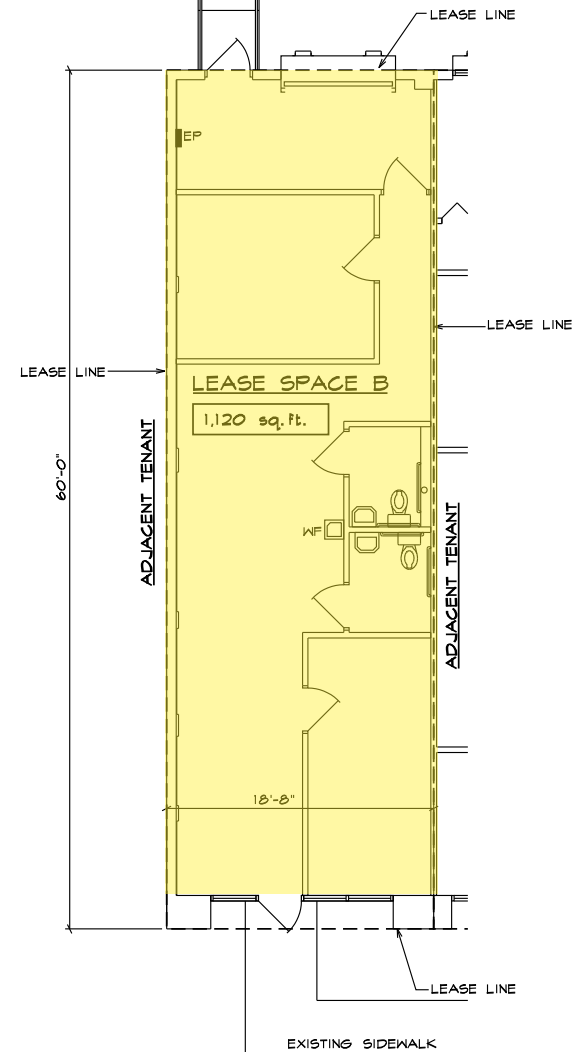


**Fiser, inc.**

fiserinc.com

**NORTH PARK**  
INDUSTRIAL COMPLEX

**Building 2**  
Bay B  
1,120 SF



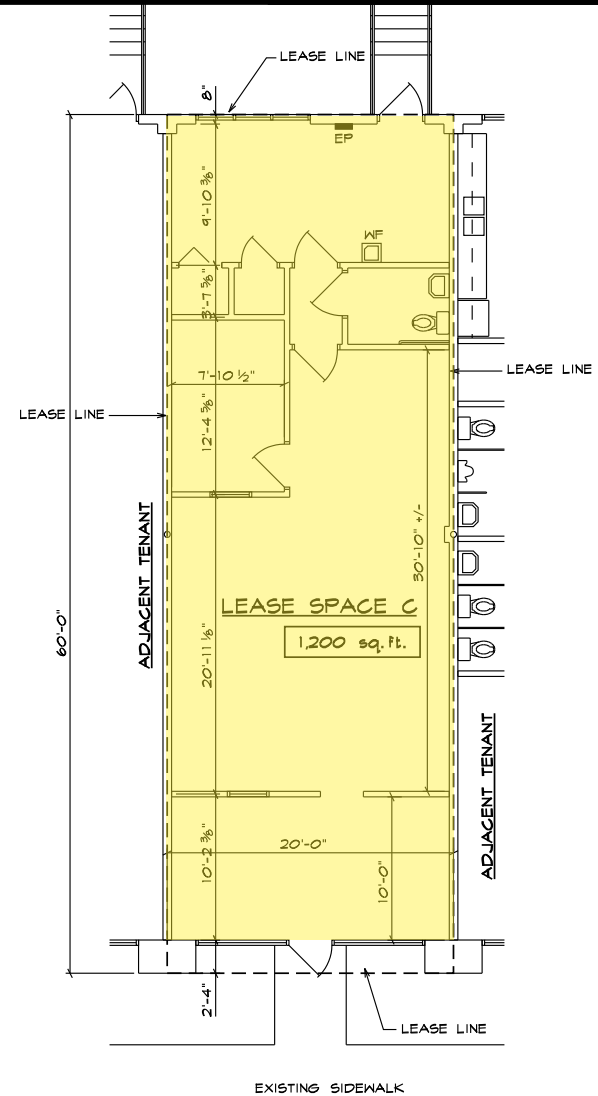
**FOR MORE INFORMATION** John Osborne [josborne@fiserinc.com](mailto:josborne@fiserinc.com) 865-693-0711 w 865-207-6479 m

# Fiser, inc.

fiserinc.com

## NORTH PARK INDUSTRIAL COMPLEX

**Building 2**  
Bay C  
1,200 SF



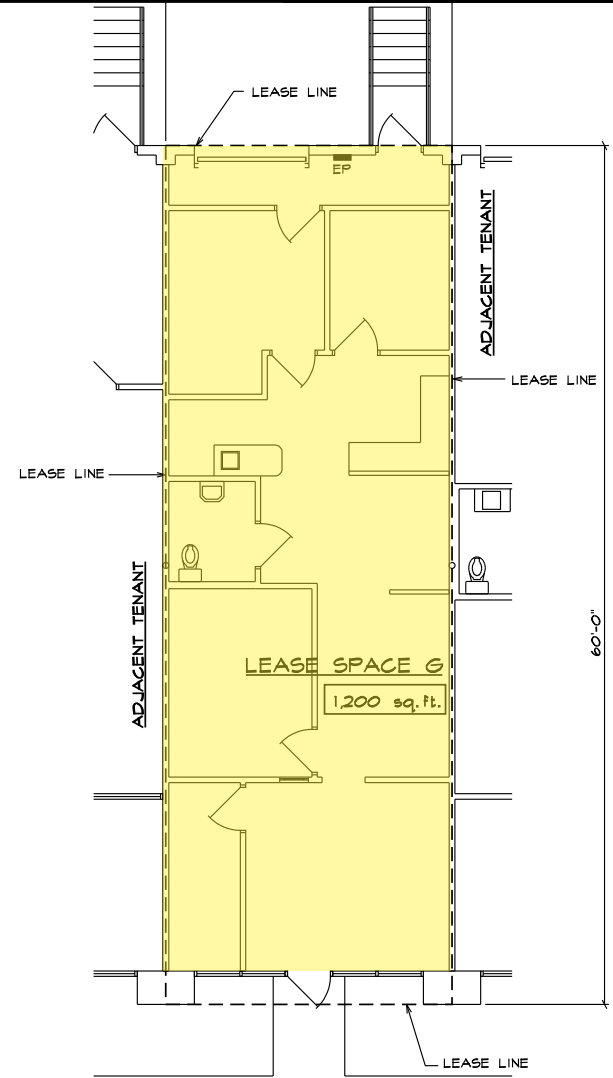
**FOR MORE INFORMATION** John Osborne [josborne@fiserinc.com](mailto:josborne@fiserinc.com) 865-693-0711 w 865-207-6479 m

**Fiser, inc.**

fiserinc.com

**NORTH PARK**  
INDUSTRIAL COMPLEX

**Building 2**  
Bay G  
1,200 SF



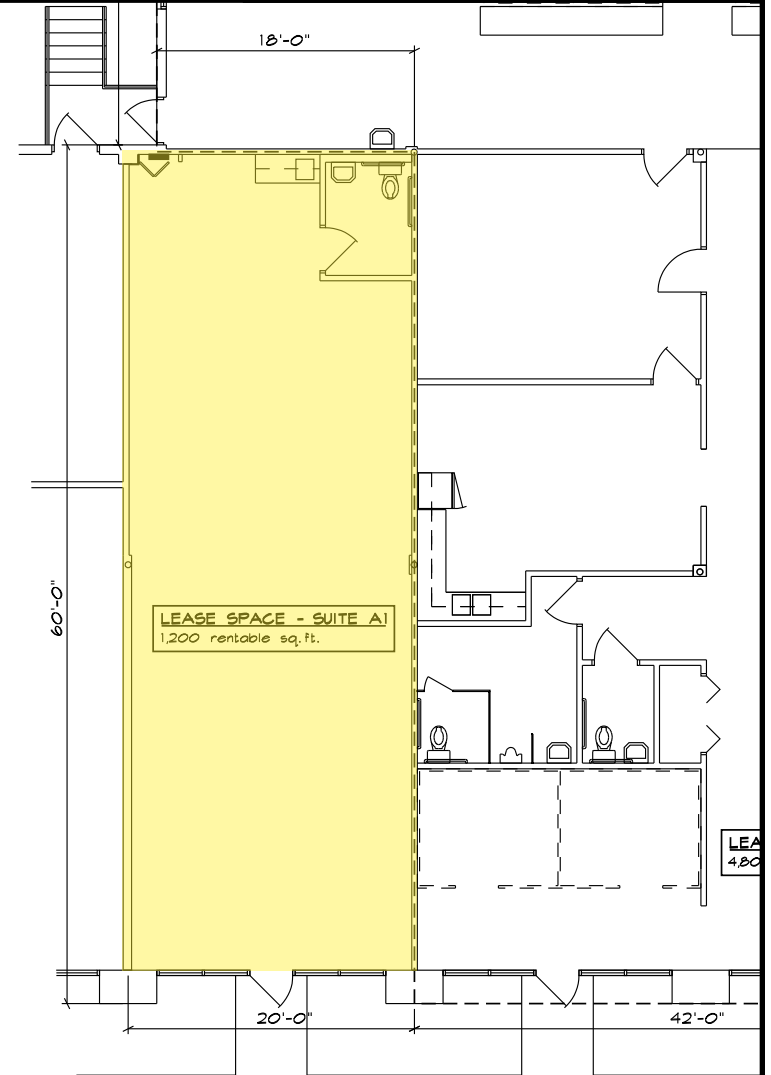
**FOR MORE INFORMATION** John Osborne [josborne@fiserinc.com](mailto:josborne@fiserinc.com) 865-693-0711 w 865-207-6479 m

**Fiser, inc.**

fiserinc.com

**NORTH PARK**  
INDUSTRIAL COMPLEX

**Building 2**  
Bay A-1  
1,200 SF



**FOR MORE INFORMATION** John Osborne [josborne@fiserinc.com](mailto:josborne@fiserinc.com) 865-693-0711 w 865-207-6479 m